



INFINITY AUTOMATION SYSTEM PVT.LTD.

# About Us

**Year Of Establishment:** 2006

**Work Areas:** Design & Manufacturing of Assembly Lines, SPM, Checking Gages, Operational Fixtures (Cutting, Marking),

Insertion Machines (Manual, Pneumatic, Hydro pneumatic), Testing Machine, Riveting Machine, Screwing Machine, Glue Dispensing Machine, Grease dispensing Machine, Vision System ( Part Presence inspection, Dimensional Measurement, Homogeneity Check ), Leak Test Machine, Assembly Machine, Cut to length machine, Forming Machine.

**Infrastructure :** 6000 SQFT.

**Employees:**

**Total - 65**

Account :2

HR :1

Design : 15

Control System : 15

Skilled Machine Operator : 6

Semi Skilled Operator :3

Assembler :6

Supervisor :2

Store:1

QC: 2

Vendor Development:1

Purchase :1

Welder : 2

Helper: 2

Marketing -4

Operation-2

**Machinery Setup:**

VMC (MV Junior) (600x400x400) – 01

VMC (Jyoti)-PM1200 – (1200x610x610)-01

Lathe: 01

Milling : 02

M1TR: 02

Band Saw: 01

Surface Grinding Machine-1

Drilling Machine-2

Tapping Machine -1

Bench Grinder -2

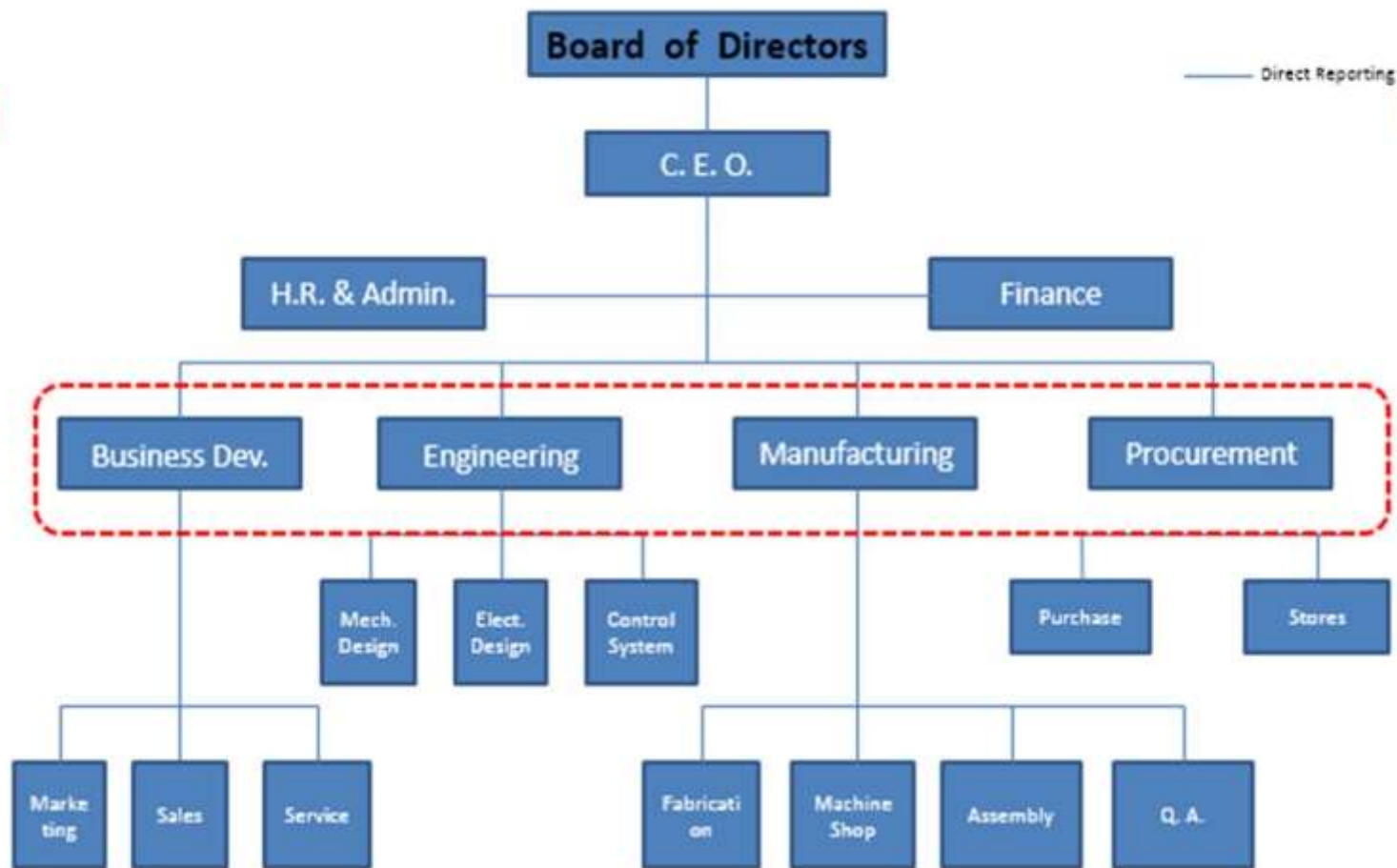
**Welding machine:**

Co2 Welding Machine -1,

TIG Welding Machine – 01

CMM – FARO Arm.

# ORGANISATION STRUCTURE



## Manufacturing Facility



VMC –MORI-SEIKI



VMC –JYOTI

# Manufacturing Facility



M1TR -FOSTER



M1TR -MIRCOMILL

# Manufacturing Facility



Milling-Vernier



Milling-Pioneer



Lathe-Crown

# Manufacturing Facility



Surface Grinding—John Shipman



Drilling Machine



Tapping Machine



Band Saw Machine

# Design

Design Team

Design Head-1

Designer -10

Draftsmen -4

Design Software - Solid works



Designed  
with

**3D**  
SolidWorks



## Quality Inspection Facility



Portable Faro Arm

Delcam  
**PowerINSPECT**



## Control System

Control System Head -1  
Automation Engineer-06  
Electrician -3  
Panel Builder-2



Hands-on Experience on every PLC in Market, Also Expertise in SCADA & Robotic System

## Embedded System

In-house Embedded System Development Department

In some condition the ready solution not available in market so in that case we are able to developed core electronic based sensor & control circuit in embedded system

Example of some of our development



Color Sensor



Leak Testing Controller

## Assembly Lines

- 1) Push Brake Lever (Handbrake)
- 2) Rear Lamp
- 3) Head Lamp
- 4) Fog Lamp
- 5) Vacuum harnessing
- 6) PBA Assembly
- 7) IRVM
- 8) ORVM
- 9) Rubber Hose Assembly
- 10) Nylon Pipe Assembly
- 11) AC Shroud Assembly
- 12) AC Hoses Assembly
- 13) Gear Shifter Assembly

## Standard Machines, Controller & Tools

- 1) Hotplate Welding Machine ( Servo / Pneumatic)
- 2) Heat Insertion Machine
- 3) Hot Plate Tools
- 4) Heat Stacking Machine
- 5) Forming Machine
- 6) Leak Test Machine
- 7) Leak Test Equipment
- 8) Colour Light Sensor
- 9) Sleeve Cutting Unit
- 10) Assembly Machine
- 11) Cut to Length Machine
- 12) Beeding Machine

### Software Systems

- 1) Andon System
- 2) Part Traceability
- 3) Data Acquisition & Reporting.

## ASSEMBLY LINE & WORKSTATIONS PHOTOGRAPHS



PES MODULE ASSY LINE



H79 ASSY LINE STATIONS –AWARD WINNING

## USP-ONE STOP SOLUTION



# Clients





Infinity Automation System Pvt Ltd